



Easy Chess Puzzle # 0041

By

G Bud Games
<https://gbud.in>

October 12, 2021

Contents

1	Easy Chess puzzle # 0041 - How will you save your piece?	3
1.1	Easy chess puzzle 0041	4
1.2	Solution to easy chess puzzle 0041	4
1.2.1	Solution 1	5
1.2.2	Solution 2	6
1.2.3	Right moves for the solution to the easy chess puzzle 0041	8
1.2.4	Explanation for the moves	8
1.3	Categories of easy chess puzzle 0041	9
1.4	How to view the solution to easy chess puzzle 0041	9
1.5	How to get help for moves in the easy chess puzzle 0041	10
1.6	Play chess for free	11

List of Figures

1.1	Solve this easy chess puzzle 0041. How will you save your piece? @ https://gbud.in/g00r1s1	4	
1.2	Solve this chess puzzle online with solution @ https://gbud.in/g00r1s1	4	4
1.3	Initial board position of easy chess puzzle 0041	5	
1.4	Nd8 - This blocks the queen's attack on the bishop. If you have not done this you will lose your bishop	6	
1.5	Initial board position of easy chess puzzle 0041	7	
1.6	Be7 - Now the bishop is supported.	8	
1.7	Click the solution button to view solutions @ https://gbud.in/g00r1s1	9	
1.8	Click the help button to get help on next move @ https://gbud.in/g00r1s1	10	
1.9	Solve more easy puzzles @ https://gbud.in/chsezpz	10	
1.10	Solve other puzzles @ https://gbud.in/chsgppz	11	
1.11	Play chess online for free. Solve puzzles and play with friends	11	
1.12	Solve this puzzle online by scanning this QR code or go to the link below	12	

Chapter 1

Easy Chess puzzle # 0041 - How will you save your piece?

Solve this easy chess puzzle and improve your chess games through improvement of your chess strategies and chess tactics.

Puzzle No : 0041

Difficulty level : Easy

Description : How will you save your piece?

Next Move : Black

Player level : Beginner

Short URL for puzzle : <https://gbud.in/g00r1s1>

1.1 Easy chess puzzle 0041

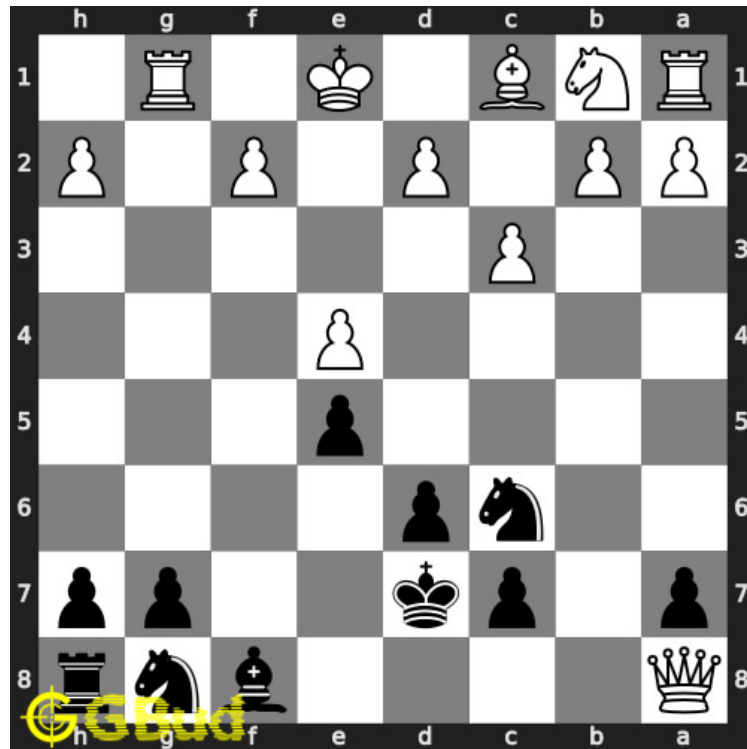


Figure 1.1: Solve this easy chess puzzle 0041. How will you save your piece? @ <https://gbud.in/g00r1s1>



Figure 1.2: Solve this chess puzzle online with solution @ <https://gbud.in/g00r1s1>

1.2 Solution to easy chess puzzle 0041

At this puzzle, next **move** is by **Black**. The objective of the puzzle is to how will you save your piece?.

See the interactive solution at the [puzzle page](#)

1.2.1 Solution 1

1.2.1.1 Initial board position

This is the initial board position of easy chess puzzle 0041.

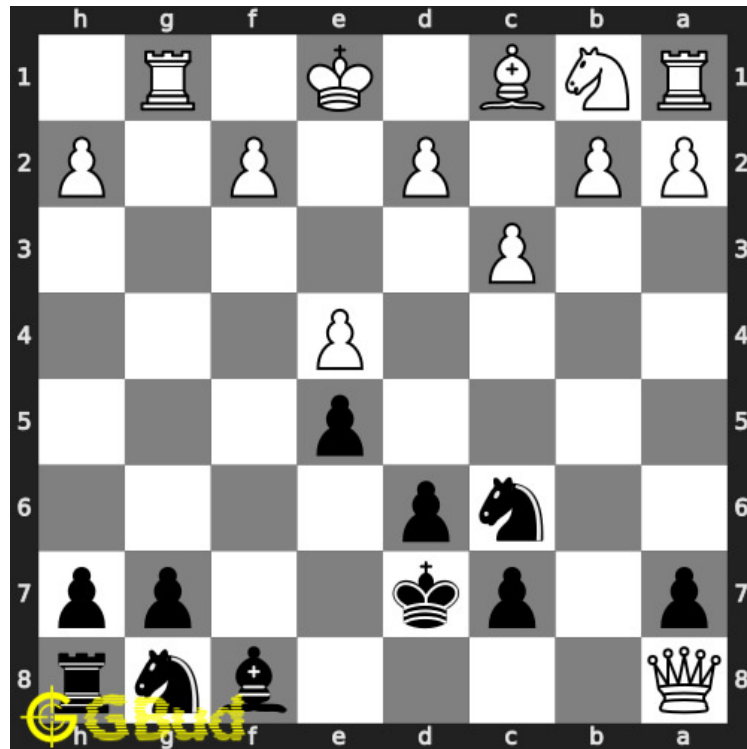


Figure 1.3: Initial board position of easy chess puzzle 0041

1.2.1.2 Move 1

Move by black

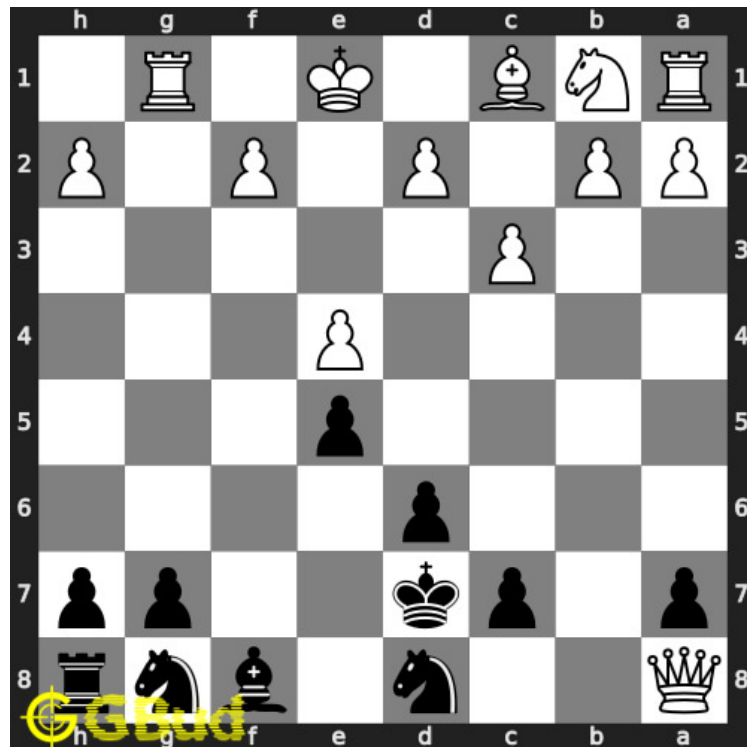


Figure 1.4: Nd8 - This blocks the queen's attack on the bishop. If you have not done this you will lose your bishop

1.2.2 Solution 2

1.2.2.1 Initial board position

This is the initial board position of easy chess puzzle 0041.

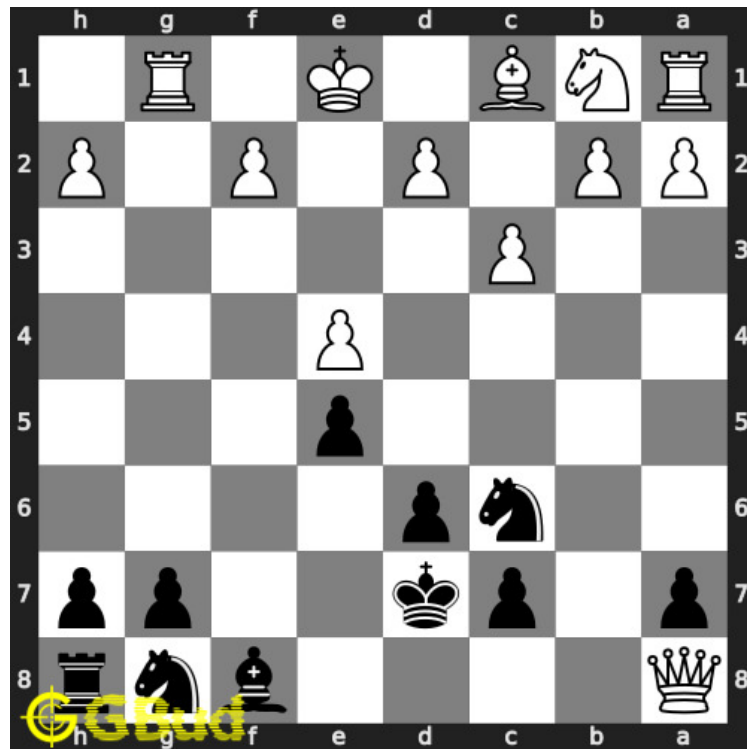


Figure 1.5: Initial board position of easy chess puzzle 0041

1.2.2.2 Move 1

Move by black

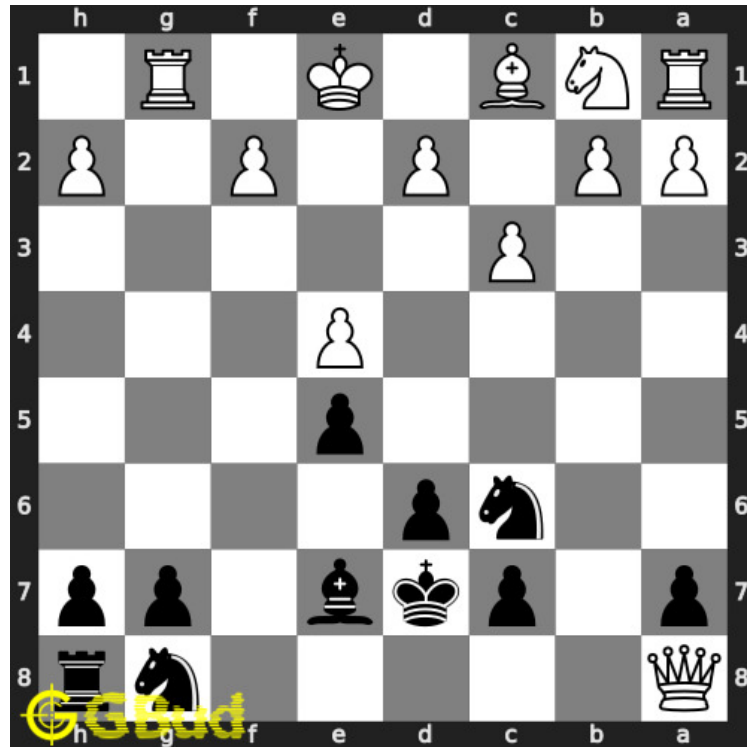


Figure 1.6: Be7 - Now the bishop is supported.

1.2.3 Right moves for the solution to the easy chess puzzle 0041

Based on the objective of the puzzle, you have to make the right moves. Following are the right moves

1. Nd8
2. Be7

1.2.4 Explanation for the moves

1. Nd8 - This blocks the queen's attack on the bishop. If you have not done this you will lose your bishop
2. Be7 - Now the bishop is supported.
3. For right move - You saved both your knight and bishop. Keep up the good work
4. For wrong move - You will lose your bishop or knight. wrong move. Try again

1.3 Categories of easy chess puzzle 0041

This easy chess puzzle falls in these categories.

1. [Easy chess puzzles](#)
2. [Strategy puzzles in chess](#)

1.4 How to view the solution to easy chess puzzle 0041

To view the [solution to this puzzle](#), follow the steps given below

1. Go to the [puzzle page](#)
2. Click the solution button (Key as shown [below](#)) to view the solution



Figure 1.7: Click the solution button to view solutions @ <https://gbud.in/g00r1s1>

1.5 How to get help for moves in the easy chess puzzle 0041

To get help or the possible next moves in the puzzle, , follow the steps given below

1. Go to the [puzzle page](#)
2. Click the help button (exclamation mark as shown [below](#)) to get help or suggestion on next possible [move](#)



Figure 1.8: Click the help button to get help on next move @ <https://gbud.in/g00r1s1>



Figure 1.9: Solve more easy puzzles @ <https://gbud.in/chsezpz>



Figure 1.10: Solve other puzzles @ <https://gbud.in/chsgppz>

1.6 Play chess for free

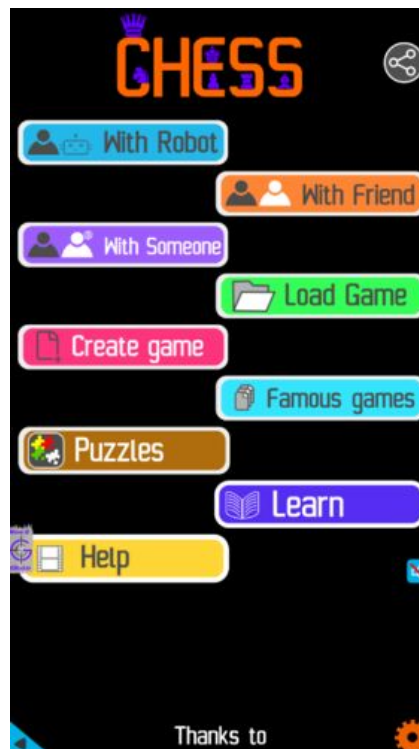


Figure 1.11: Play chess online for free. Solve puzzles and play with friends

Play chess for free at <https://gbud.in/chs>

We present you a platform to play chess online with friends for free. No need to install any app. You can play chess for free without registration or login.

Simple. You can do several chess related activities.

1. [solve chess puzzles](#)
2. [learn about chess](#)

3. [play chess with computer](#)
4. [play chess with friend](#)
5. [create your own chess games](#)
6. [fen viewer](#)
7. [fen editor](#)
8. [fen generator](#)
9. [pgn viewer](#)
10. [chess board editor](#)
11. [view famous chess games.](#)



Figure 1.12: Solve this puzzle online by scanning this QR code or go to the link below

<https://gbud.in/g00r1s1>

Read the latest article on Easy Chess puzzle # 0041 - How will you save your piece? by scanning this QR code or click the link

Previous article : « [Easy Chess puzzle # 0040 - Mate in 1 move](#)

Next article : [Easy chess puzzles](#) »

Access the latest version of this article at
<https://gbud.in/blog/game/chess/easy-chess-puzzles/easy-chess-puzzle-0041.html>

[Back to top](#)

[Contact Us](#)

© GBud Games 2021